

# Smart VOA Array

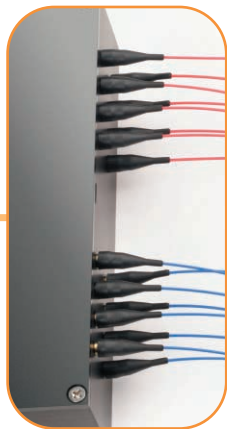
## LT3500

The LT3500 Series of Smart VOA Arrays provides precision resolution, excellent repeatability and extremely low insertion loss. The LT3500 control electronics incorporates on board control circuits including operating software, calibration data and an RS232 driver. The Smart VOA Array is fully configured and ready to drop into the most complex optical communication systems.

- Dynamic attenuation range of 0-20 dB
- Precise attenuation resolution of <0.1 dB
- Insertion loss of 0.35 dB, typical
- Patented beam director eliminates interference filters in the optical path
- Compact size – 12.5 x 63.5 x 63.5 mm (2 channel)  
15.3 x 132.0 x 121.6 mm (4 channel)

### Applications

- Power management
- Add/drop
- Amplifiers
- OADM



Fiberoptic Solutions at the Speed of

**LIGHTech**<sup>TM</sup>  
FIBEROPTICS, INC.

**Corporate Office:** 1981 Adams Avenue • San Leandro, CA 94577-1005 • Tel 510.567.8700 • Fax 510.567.8701  
**Customer Service:** Sales Support 510.567.8503 / 510.567.8307 • Fax 510.567.8506 • Toll Free 800.567.1688 • info@lightech.net

[www.lightech.net](http://www.lightech.net)

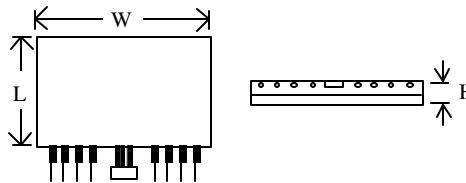
## Performance Specifications

Specifications	LT3500 Series Smart VOA Array		Units
Attenuation Range <sup>1</sup>	0 ~ 20		dB
Residual Attenuation (Min. Insertion Loss) <sup>3,4</sup>	0.35 typ – 0.6 max		dB
Operating Temperature	0 to 65		°C
Back Reflection	< -55		dB
Max Optical Power	300		mW
Wavelength Dependent Loss <sup>2</sup>	≤ 0.2		dB
PDL	< 0.1		dB
Tuning Time <sup>5</sup>	300		ms
Resolution	< 0.1		dB
Control	RS232 Interface		--
Housing Dimensions (HxWxL)	2-channel	12.5 x 63.5 x 63.5	mm
	4-channel	15.3 x 132.0 x 121.6	mm
	8-channel	15.3 x 194.0 x 121.6	mm
Wavelength Window	1280 ~ 1340		nm
	1525 ~ 1565		

All specifications referenced without connectors and based on single wavelength (1550 nm)

1. Custom attenuation ranges available
2. WDL at 15 dB of attenuation
3. Insertion loss based on 1550 nm single wavelength
4. Add 0.2 dB for 1310/1550 nm dual wavelength
5. From 0 to 3 dB

### Basic Housing Configuration:



### Ordering Information: <sup>(4)</sup>

Example: X4A15065R-FCA2

Code	Channels	Code	Max Attenuation	Code	Wavelength	Code	Connector Type	Code	Pigtail <sup>(3)</sup>
2	2 channels	10	10 dB	3	1310 nm	FCA	FC/APC	2	900 μm loose tube <sup>(1)</sup>
3	3 channels	15	15 dB	5	1550 nm <sup>(1)</sup>	FCP	FC/PC	3	3.0 mm tight buffer
4	4 channels	20	20 dB	D	1310/1550 nm <sup>(2)</sup>	FCU	FC/UPC	9	900 μm tight buffer
5	5 channels			S	Special	SCA	SC/APC	S	Special
6	6 channels					SCP	SC/PC		
7	7 channels					SCU	SC/UPC		
8	8 channels					STP	ST/PC		
9+	Contact us					XXX	No Connectors		
						SSS	Special		

- (1) Product standards
- (2) Cause specification change
- (3) Length: 1 ± 0.1 meter
- (4) Custom specifications available

The information set forth in this document reflects our best knowledge at the time of issue. The document is subject to changes pursuant to new developments and findings, and a similar reservation applies to the properties of the products described. We undertake no liability for results obtained by usage of our products and information.